

Tocca Design

Tocca Design has created the Sculpture light as more than just an electrical appliance to stand in the corner. Encouraging interaction between the design and its users, Sculpture allows versatility in shape and position owing to its flexible elements. Tocca Design is another Taiwan-based company represented by the Taiwan Design Center, which showcased Taiwanese design talent at Maison et Objet in Paris, September 2007.

Tocca Design Production House
1F, No. 28, Lane 141, Fuhua Road
Taipei, 111


Taiwan

T +886 2 2835 0461

F +886 2 2835 6112

denis_lu@toccadesign.com

www.toccadesign.com

icon INFO  325



Avante Bathrooms

Avante chose the versatile material Corian for the Cielo collection of vanity tops for its durability and vibrant colours, creating an exclusive look for contemporary bathrooms and cloakrooms. The Cielo collection can be found at Avante's virtual bathroom showroom on the web, which is filled with basins of all shapes and sizes that can be delivered to your door in just three working days.

Avante Bathrooms

Thistle House, Thistle Way

Gildersome Spur

Wakefield Road

Leeds


LS27 7JZ

T 0113 201 2240

F 0113 253 07171

sarah@avantebathrooms.com

www.avantebathrooms.com

icon INFO  326

Yeduo Design

Another member of the Taiwan Design Centre, Yeduo Design has created this clothes hanger called Pole Jump. The humorous take on this every-day object is at the heart of Yeduo Design's philosophy, developing products that make people feel good. Also available from the company is the Swim Hanger that combines the shape of a swimmer along a line of water to create a coat hanger with a fun twist.

Yeduo Design Co. Ltd

5F, No 249, Sec 2

Xi-an Street, Beitou District

Taipei 111


Taiwan

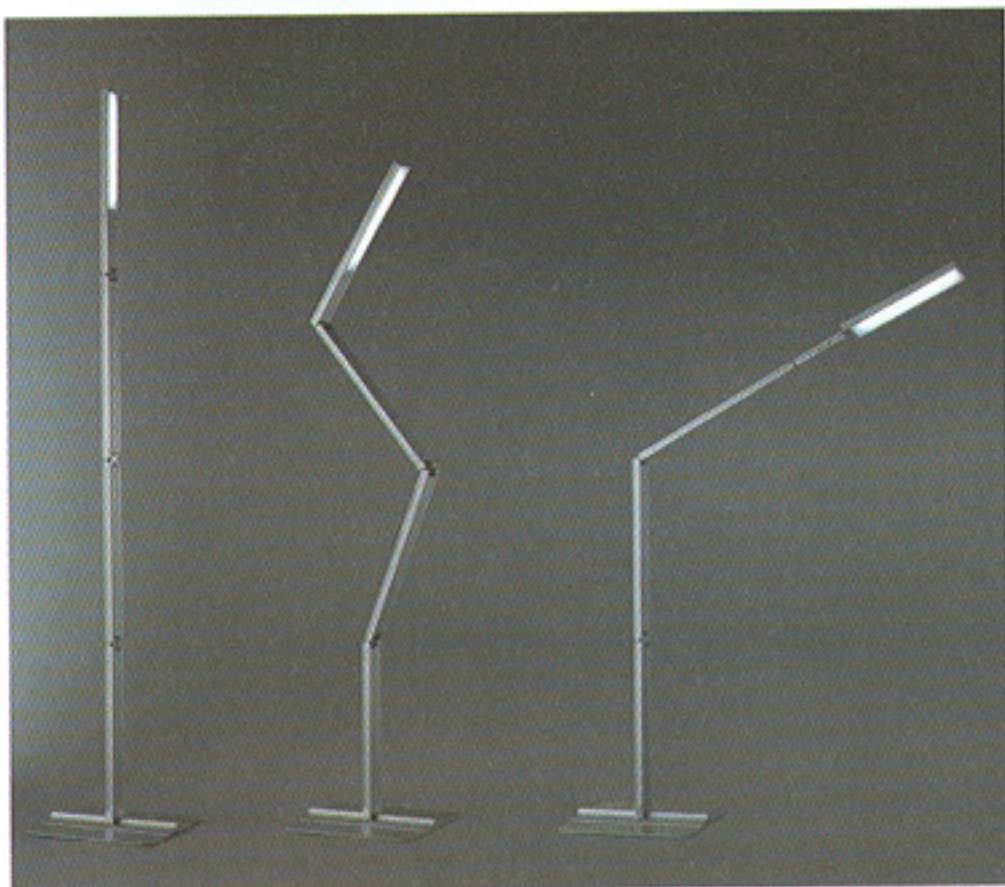
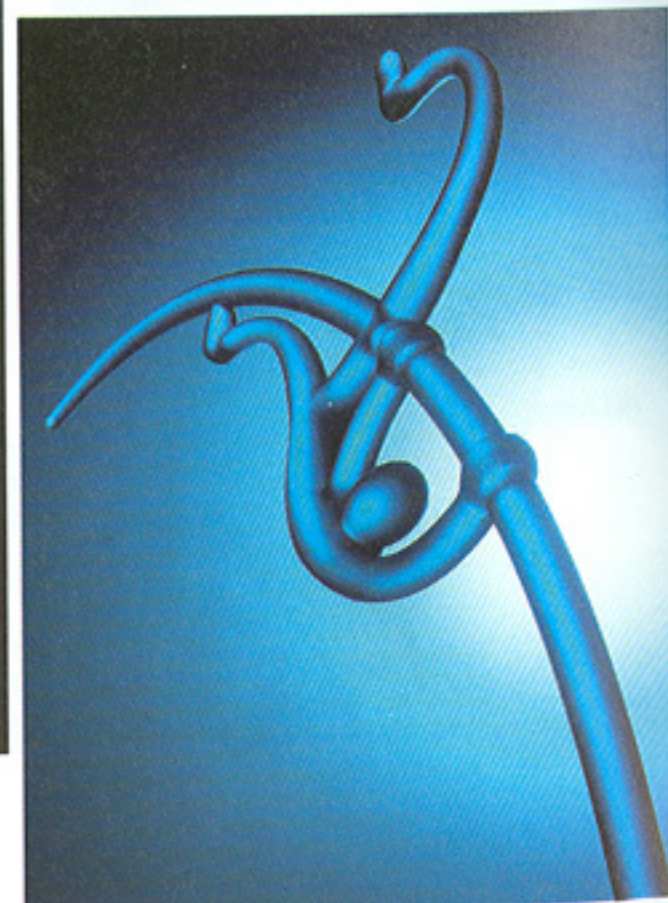
T +886 22828 7801

F +886 228287804

murphy@yeduo.com

www.yeduo.com

icon INFO  327





Mindspring

Drawing on inspiration from both Mediterranean art and contemporary design, Marrakesh is a modular LED lighting system that can be arranged in endless variations, allowing total artistic freedom in terms of space, size, location and colour. Its light can either be direct or reflected, for atmospheric, decorative effects. Focusing on well-designed, distinctive products, Mindspring is another company represented by the design-umbrella Taiwan Design Centre.

Mindspring
2F-6, No. 128
Sec. 2
Tunhua South Road
Taipei, 106
Taiwan
T +886 2 2706 6804
F +886 2 2706 6713
sammi@mindspring-
lighting.com
www.mindspring-
lighting.com

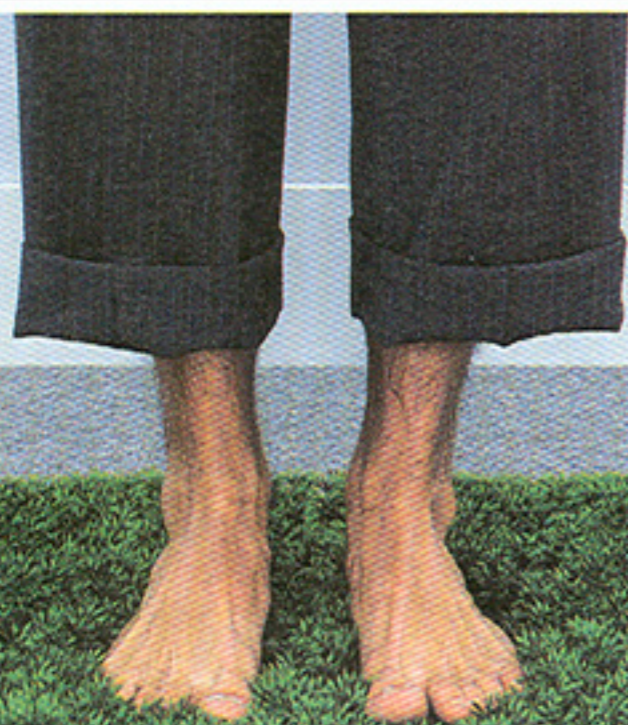
icon INFO 316

Parapan

Kitchen designers like Mowlem and Co Design are increasingly using Parapan, an acrylic material that is more hardwearing than lacquer and other applied finishes. With its non-fade colour running all the way through, it is glossy, waterproof and very repairable. Kitchen designers choose it for its colour range, durability and because it can be thermoformed into curves or machined as easily as wood. Parapan makes great wall cladding too.

Parapan
Thistle House
Thistle Way
Gildersome Spur
Wakefield Road
Leeds LS27 7JZ
T 0113 201 2240
info@parapan.co.uk
www.parapan.co.uk

icon INFO 317



Antron

Antron carpet fibre from Invista helps deliver high-performance soft-flooring solutions to commercial environments, providing excellent design flexibility, soil-hiding capabilities, stain resistance and durability. With the combination of a dedicated fibre consultant, Harwinder Bharmer, and two RIBA-approved CPD seminars, Invista Antron carpet fibre has unrivalled experience in helping architects, interior designers and end users understand and realise their design and performance requirements for soft



Iloomi

Taiwan-based lighting company Iloomi introduces the Cave Ball series of lamps. Transforming traditional lights into fresh, eye-catching lighting objects, Iloomi combines metal, fabric, wood, glass and plastic with creativity, imagination and fun. The geometric shapes of the Cave Ball range are available in a variety of colours and as either a pendant, table or full length floor lamp. The Taiwan Design Centre, who represents Iloomi and others for the world market, seeks to disengage the Taiwan design-scene from its stereotypical perception of cheap labour and low-priced products.

Iloomi
No. 88 Shuren 6th Street
Wufeng Shiang
Taichung, 413
Taiwan
T +886 42332 5688
F +886 42332 8988
sales@syndicatec.com
www.iloomi.com

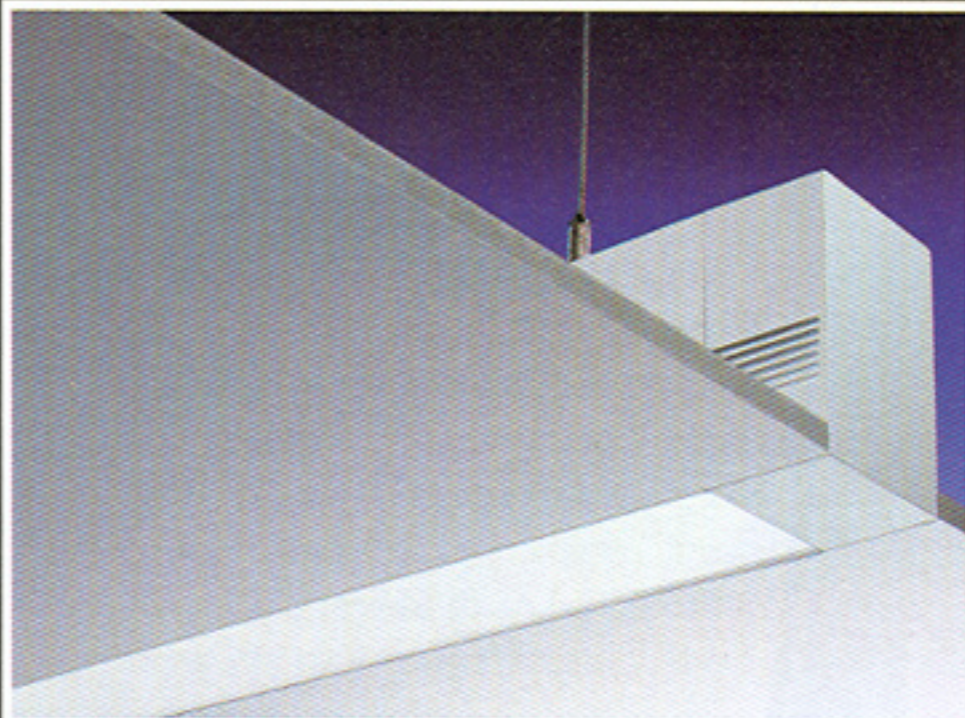
icon INFO 312

Interoffice Studio

Interoffice Studio has been launched to market highly architectural ranges of fine quality office furniture from Italy. Wabi06, designed by Mario Mazzer, includes luxury desks, conference/meeting tables, chests of drawers and cabinets, all available in different compositions and finishes. The elegant, yet strong, extruded aluminium frame of the desks and tables can be supplied with tops in an ebony finish veneer that underlines the brightness and elegance of the aluminium frame. The coloured glass can be ordered with a no-finger print, satinised finish, which ensures the tops maintain their clean, sleek appearance.

Interoffice Ltd
69-73 Theobald's Road
London WC1X 8TA
T 0207 831 6678
info@interoffice.co.uk
www.interoffice.co.uk

icon INFO 313



Havells Sylvania

Continuum from Concord:marlin is a uniquely clean, simple lighting system offering continuous, highly uniform lines of light across walls and ceilings without shadows. Suitable for offices, meeting rooms, corridors, education facilities, museums and libraries, this highly versatile lighting tool can be recessed, semi-recessed, surface-mounted or suspended, either vertically or horizontally. Furthermore, its neat U-shaped aluminium extrusion can be supplied with a totally trimless edge detail for the most minimalist of interiors.

Havells Sylvania (Concord:marlin)
Avis Way
Newhaven
East Sussex
BN9 0ED
T 0870 606 2030
F 01273 512 688
info.concord@havells-sylvania.com
www.concordmarlin.com

icon INFO 314

Dauphin

Dauphin Human Design Group launching the first ergonomically designed office chair that automatically adjusts itself to the correct position at all times. The Dauphin Bionic detects the user's weight and responds by automatically adjusting the backrest contour to relieve pressure. It also features flexible lowering of the front edge of the seat in order to relieve pressure on the thighs. It is made from high-quality materials, with interchangeable upholstery.

Dauphin Plc
Peter Street, Blackburn
Lancashire BB1 5LH
T 01254 52220
info@dauphinuk.com
www.dauphin-group.com

icon INFO 315

